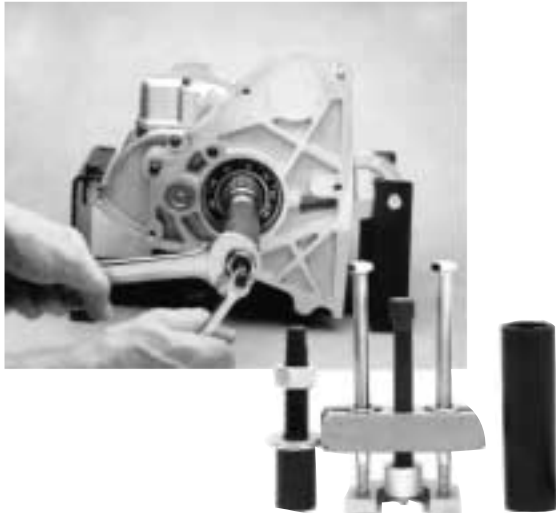




Instruction Sheet For Tool No.34902-84

Mainshaft Bearing Race Remover and Installer Use on Big Twin 1984-Present



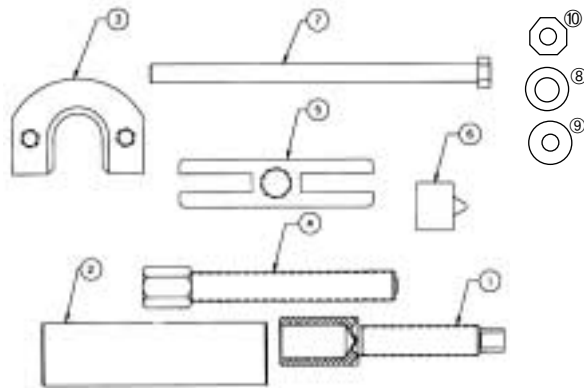
Refer to H.D.® Service Manual for specifications.

Bearing Race Removal

1. Assemble bearing plate #3 with the two bolts #7 into the puller bar #5. Install center screw #4 with a little lube, install hardened tip #6.
2. Install assembly on mainshaft positioning bearing plate behind bearing. Caution: be sure bolts are threaded into puller at least 1/2 way and are at the same length on bar.
3. Turn center screw clockwise until bearing is pulled off mainshaft.

PARTS AVAILABLE SEPARATELY

No.	Qty.	Description	Part No.
1	1	LEFT HAND EXTENSION	2139
2	1	PUSHER TUBE	2140
3	1	BEARING PLATE	34902-84-3
4	1	SCREW	1024
5	1	PULLER BAR	2013
6	1	HARDEN TIP	1025
7	2	BOLT	2030
8	2	FLAT WASHER	2031
9	2	FLAT WASHER	2020
10	1	NUT	2032



Bearing Race Installation

Oil all threads

1. Slide bearing race onto mainshaft with the chamfer toward trans. Use a press fit lube, like JIMS® #2124 on race and shaft.
2. Install left handed extension shaft #1 to mainshaft.
3. Place pusher tube, #2, over extension shaft with large flat washer #9 and nut #10.
4. Tighten nut so race is .200 from the end of the main drive gear, refer to H.D.® Service Manual.

CAUTION: Wear safety glasses. Excessive force may damage parts! See JIMS® catalog for over 100 other top quality professional tools. The last tools you will ever need to buy.

"From the Track... To the Street!"

555 Dawson Drive, Camarillo, CA 93012 • Phone 805-482-6913 • Fax 805-482-7422